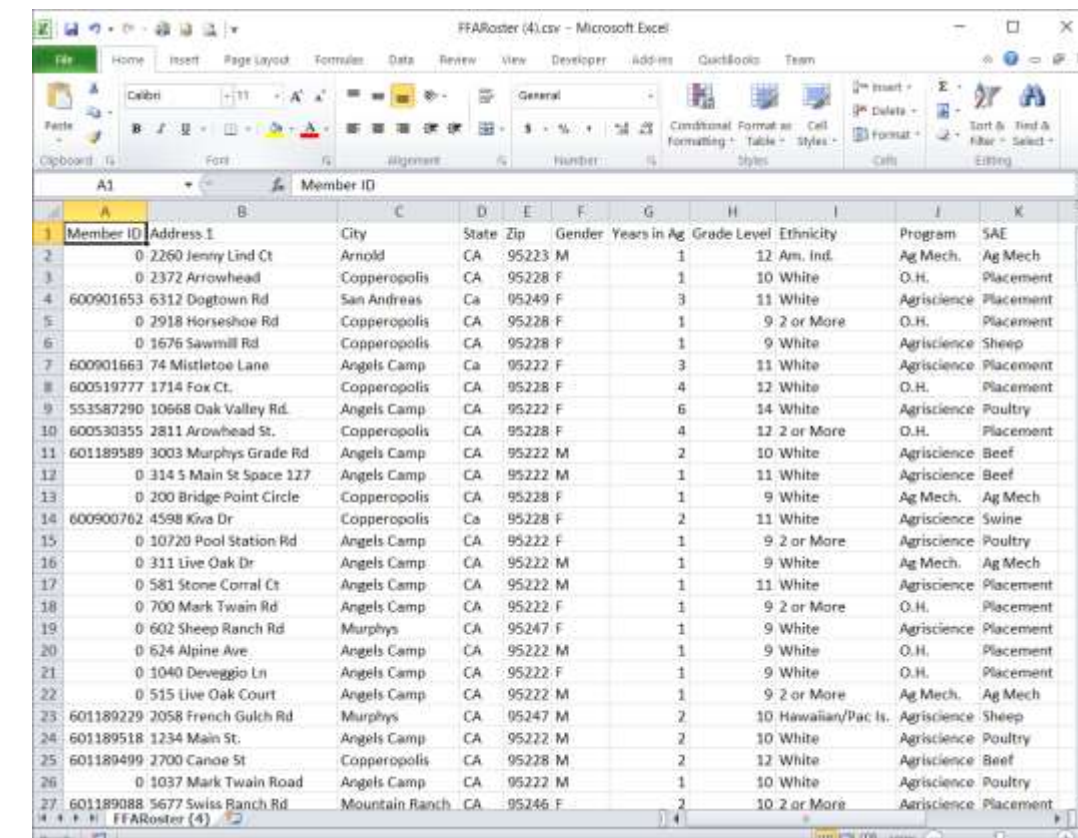


Get Data

- ❖ Geocode from address data. Use complete addresses or just zip code.
- ❖ Import with GPS coordinates collected with smart phones or GPS units.

Data Sources

- Student collected data (GPS)
- Student Rosters
- Chapter Lists
- Industry Lists



Maps provide a quick visual representation of data. Google Maps has evolved into a powerful online tool that is simple to use and has features found in more complex geographical information systems (GIS). Data is easily imported, geocoded, classified, and shared using a simple online interface. Most people are already familiar with the tool and have used it to find locations or get directions.

- ❖ Students can use the tool to present their data as part of a class assignment. Their maps can be printed or shared with others.
- ❖ Use maps to communicate spatial data quickly with students, administrators, and colleagues.

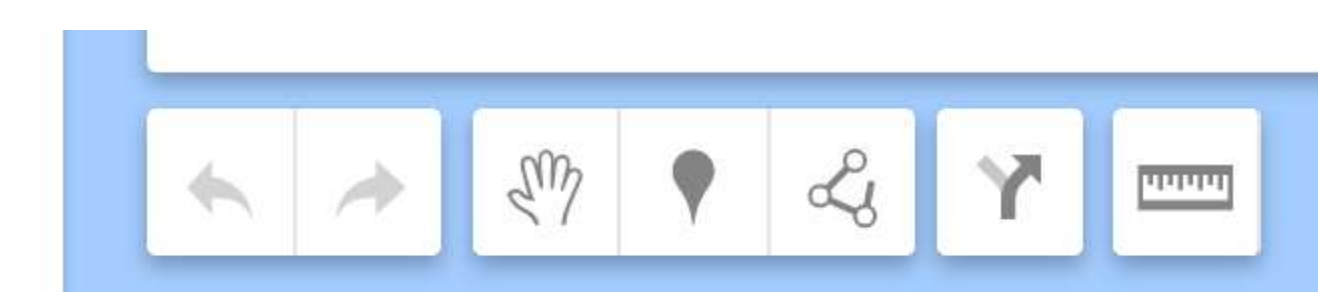
Maps can be made from various data sources the four easy steps: data collection and formatting, importing, classifying, and sharing.

Import

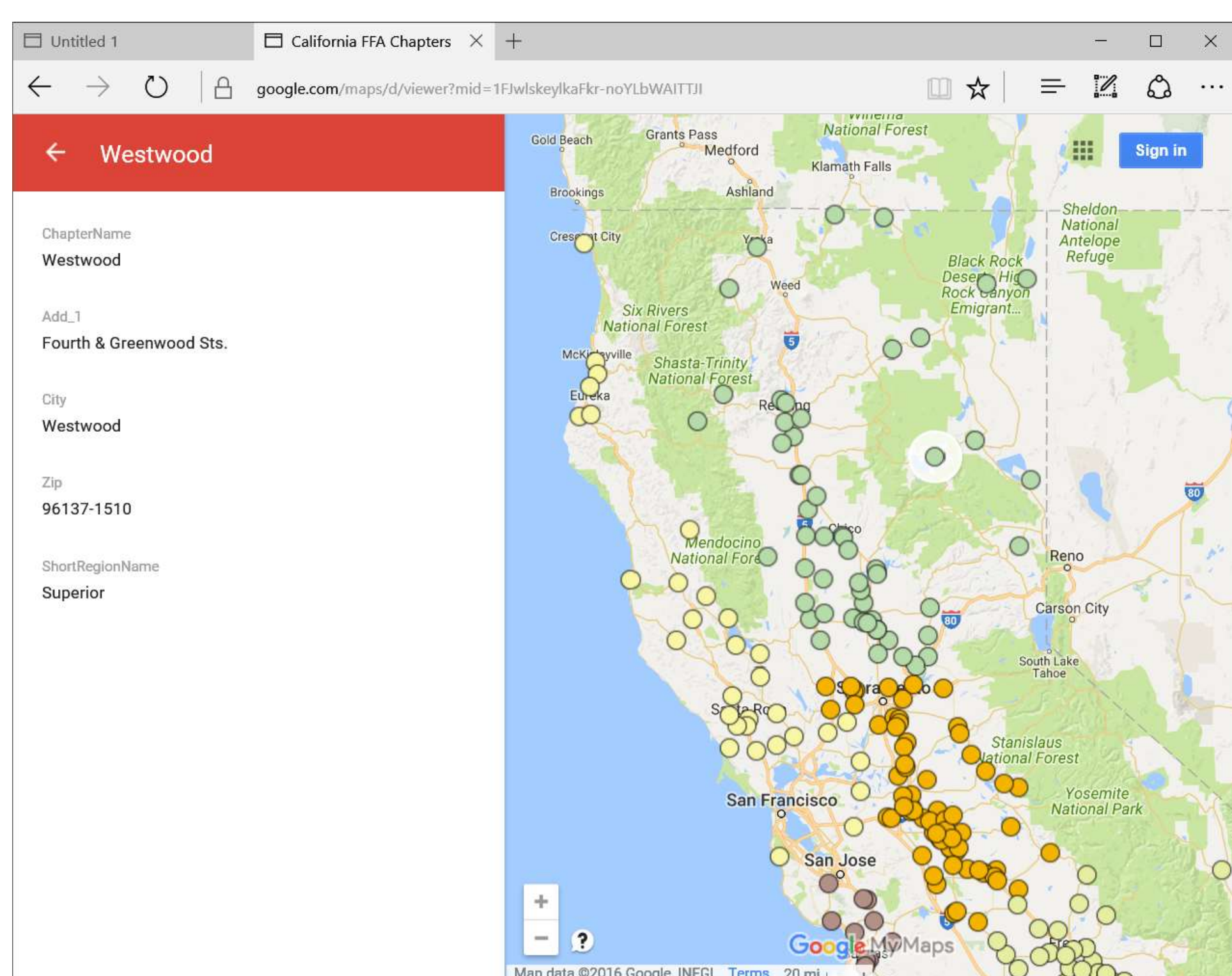
Google Maps supports importing of data in common file formats:

- ❖ Excel File – Enter data into a spreadsheet or using existing data.
- ❖ GPX (GPS export) Files can be downloaded from GPS units with free tools such as EasyGPS.

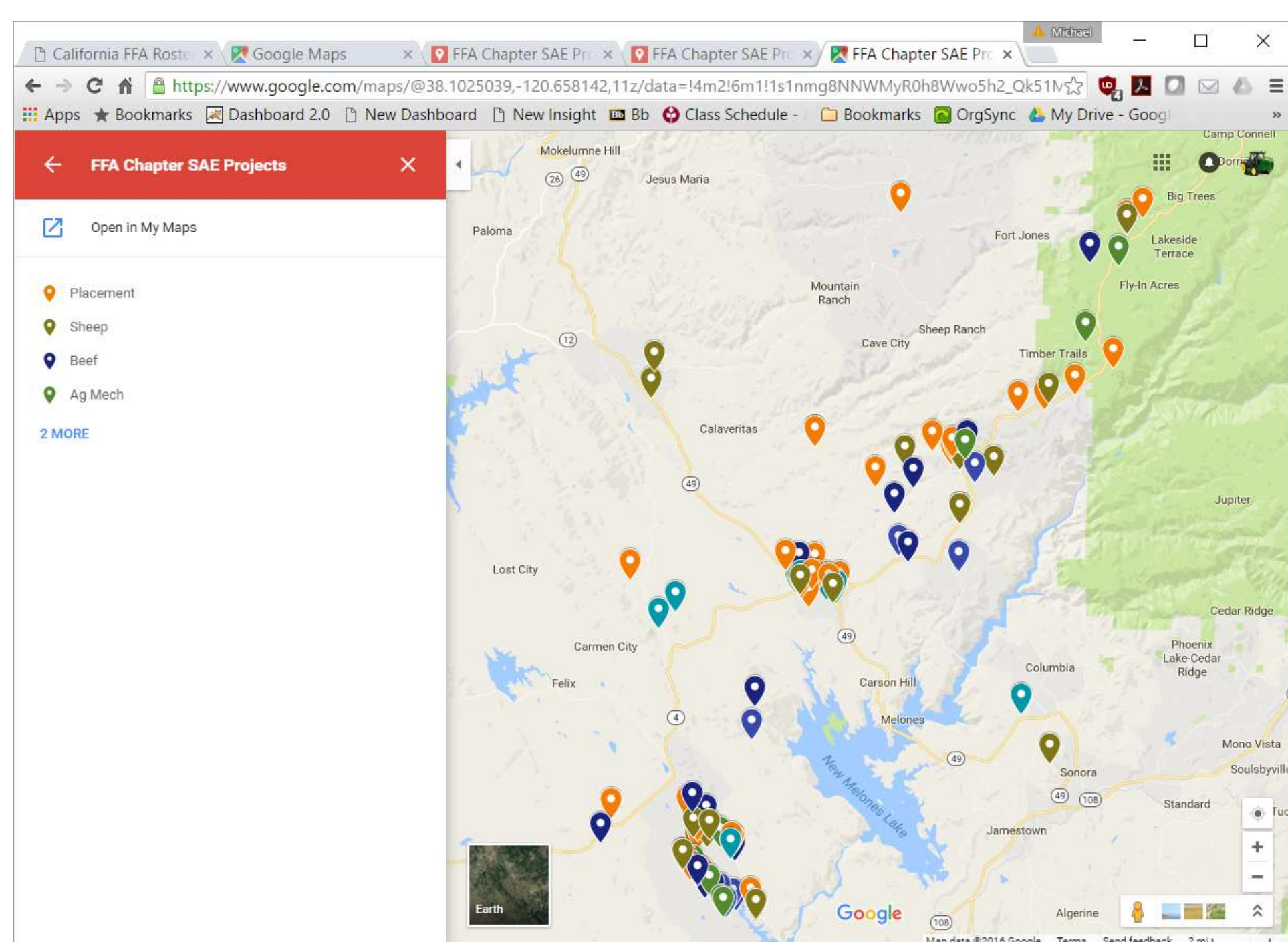
Simply select the data fields to use to geocode addresses, zip codes, or latitude/longitude. Beyond the elements needed to geocode the data you can import additional data to classify the data points. Maps can also be made directly by adding features to an aerial photo or street map.



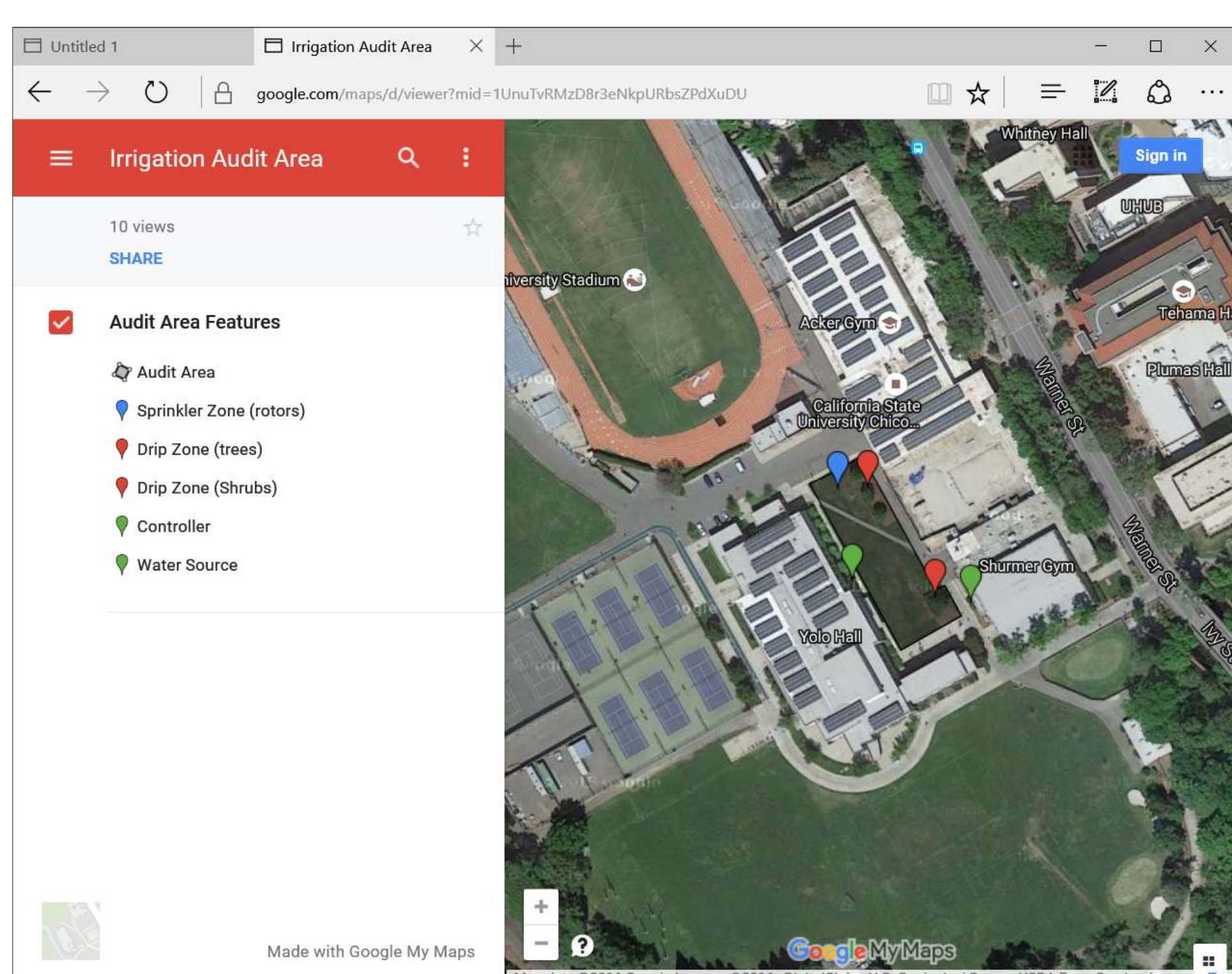
Tools are provided to create map features such as points and polygons.



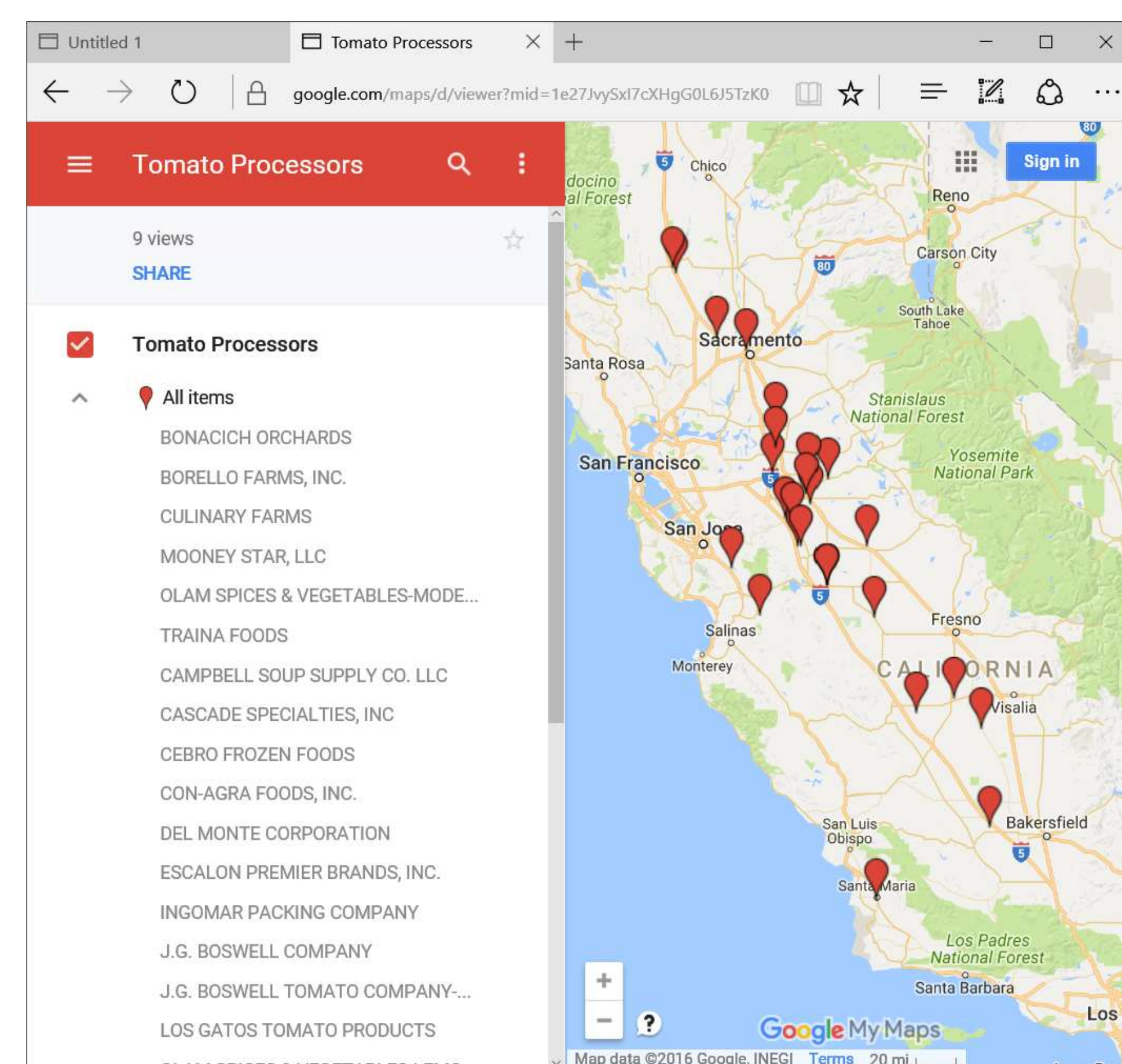
FFA Chapter Map



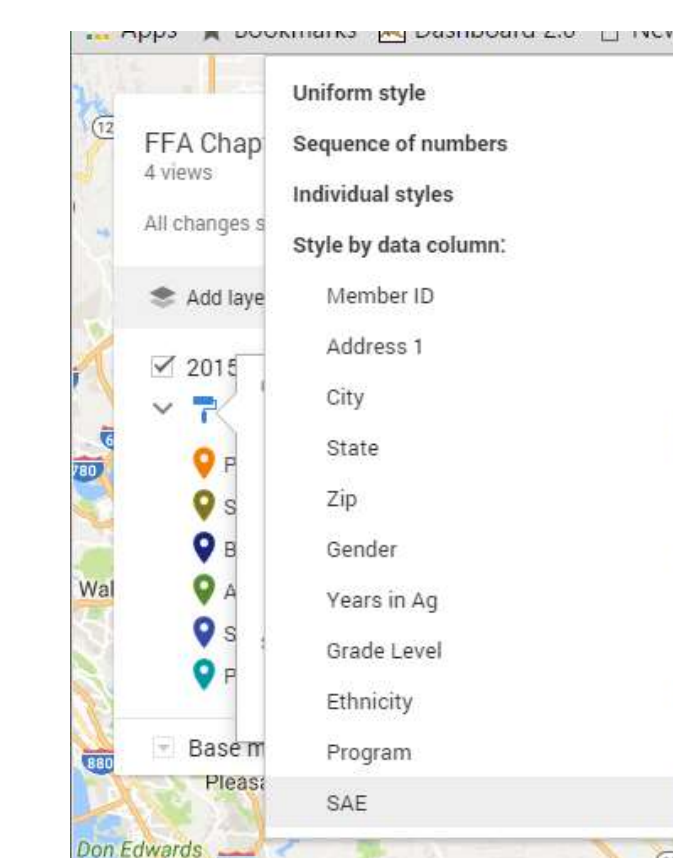
SAE Project Locations



Irrigation Class Audit Location



Tomato Processors in California

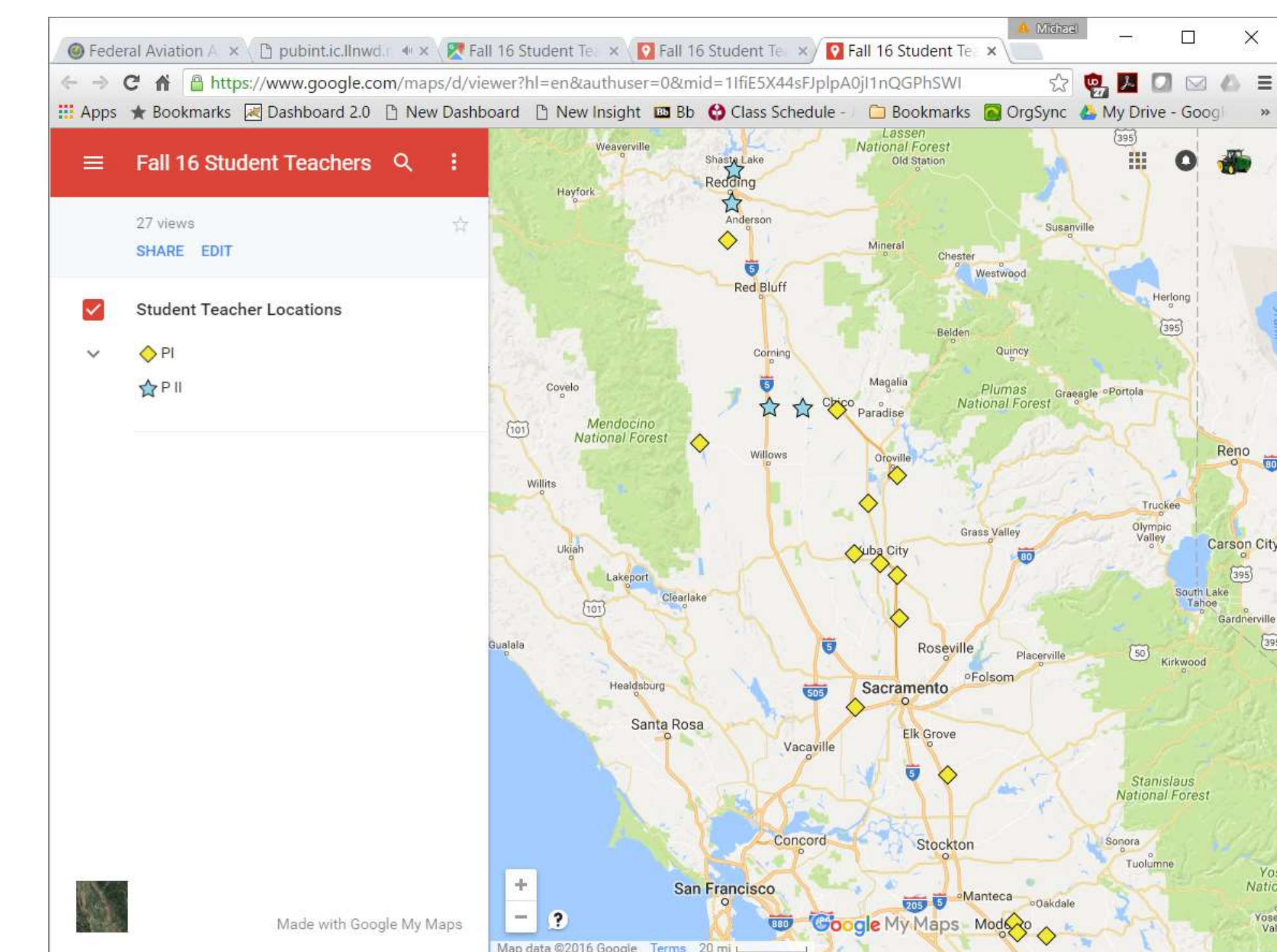


Student Origins – Multiple Classifications

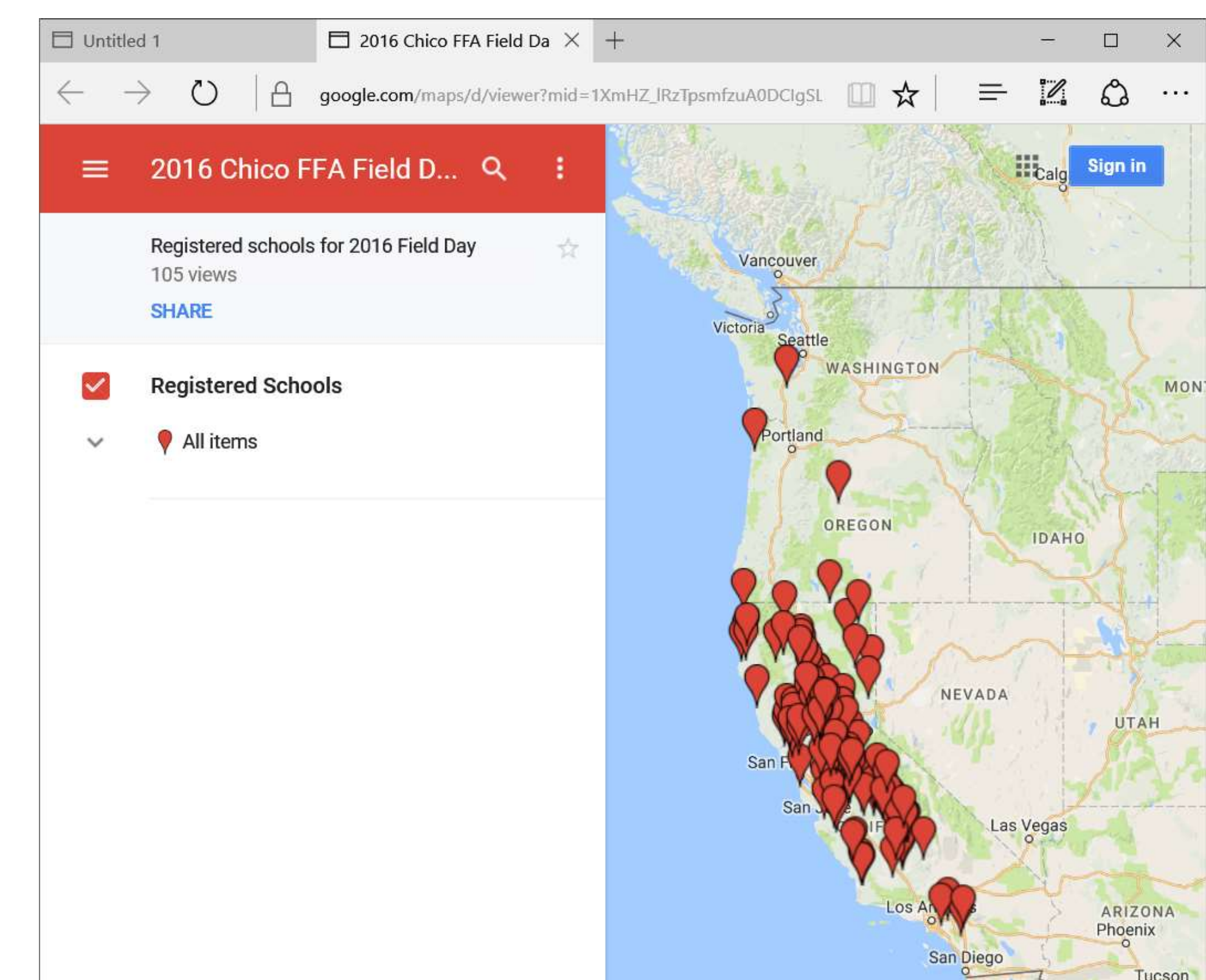
Classify

Classification groups your data for easy identification on the map. Basic tools allow for customization.

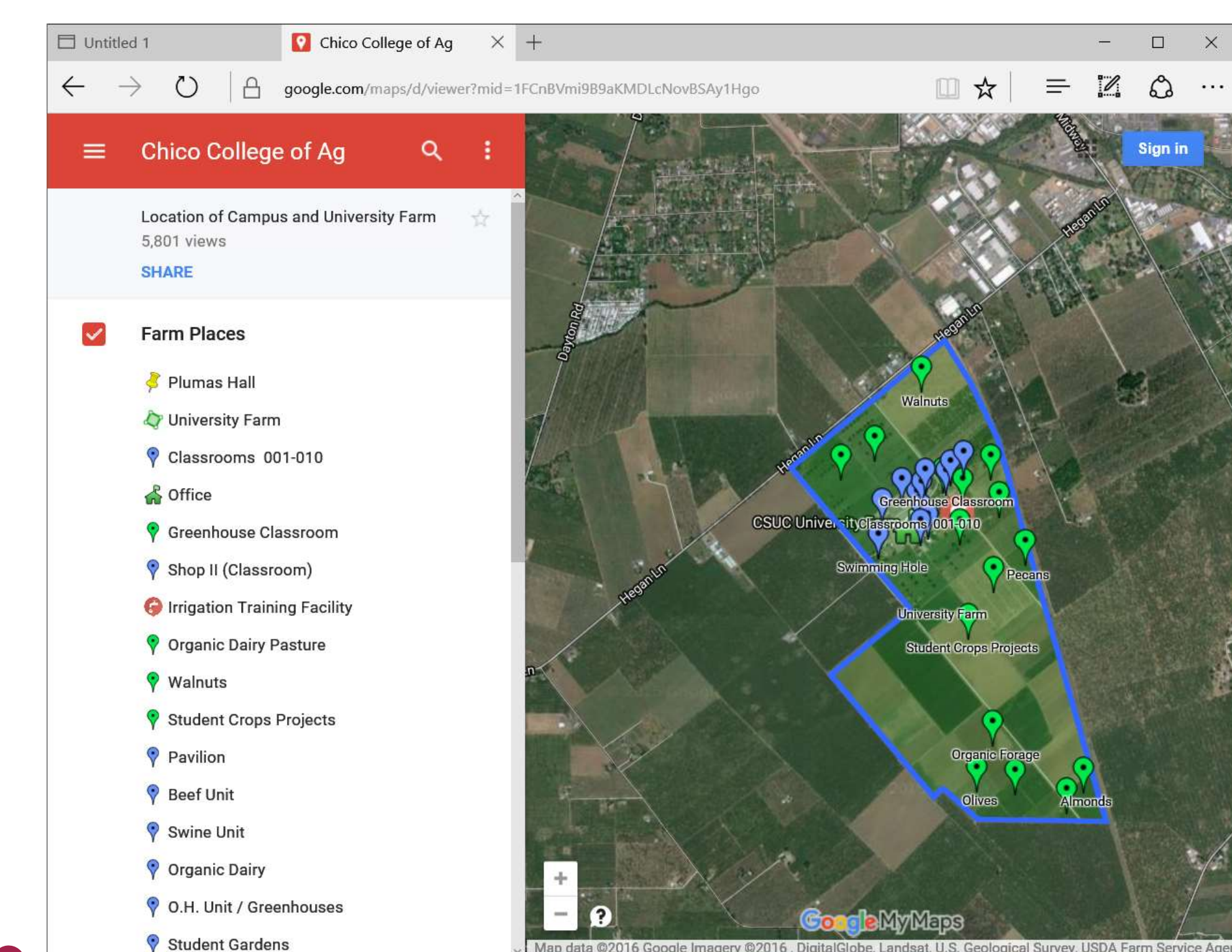
- ❖ Use a range for measured data.
- ❖ Symbols and colors can be customized.



Location of Student Teacher Sites



FFA CDE Event Participants



University Farm Map

Share

- ❖ Share by making public (searchable) or just with the link.
- ❖ Link to the map is provided.
- ❖ Note: All data in the map is visible.

