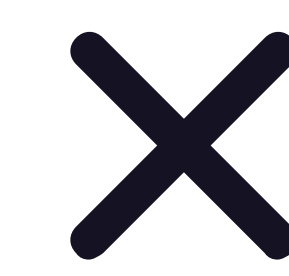


Reusable Learning Object for Extension Agents to Discern Farmers' Mental-Health



References

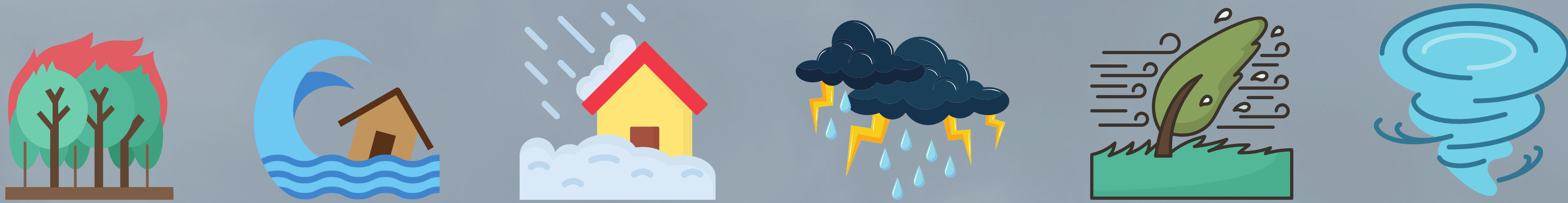


SCAN ME

Karissa Palmer, Dr. Robert Strong, & Dr. Nicole Ray

Introduction

- Climate change-induced droughts project to negatively affect farmers' mental health as they continue to become more extreme (Howard et al., 2020).
- Extension agents are vital in the transfer of scientific-related information to farmers (Wynn et al., 2016).
- Agricultural extension agents need to be better equipped with the skills and knowledge regarding agricultural risk management to address the needs of farmers (Ganpat et al., 2016).



Purpose & Learning Objectives

The purpose of the developed innovation was to improve extension agents' competencies regarding farmers' mental health impacts post natural weather-related disasters.

- 1) discern the growing concern about the mental health of farmers post-natural disaster,
- 2) discover how the innovation-decision process can assist with implementing educational programs and resources about mental health post-natural disaster, and
- 3) identify strategies to minimize mental health-related impacts using new knowledge

Expected Results

- Baker et al. (2022) suggested the establishment of an agricultural extension central resource hub as a repository for national resources and information about farmers mental health research as an open-access center.
- A Mental Health First Aid (MHFA) training was created for advisory and extension agents to improve their knowledge and skillset to recognize mental disorders and provide support and treatment options for farmers (Hossain et al., 2009).
- Extension agents who are competent in using information communication technologies (ICTs) for educational purposes (Ganpat et al., 2016) are better able to quickly communicate to (Strong, 2012) and educate a larger audience (Strong & Alvis, 2011).

How it Works

- An RLO is a brief, digital educational lesson, stored in an open-access online repository for public or private use (Gouldthorpe et al., 2013).
- One hour presentation
- American Farm Bureau YouTube video and introductory information
- Rogers' (2003) innovation-decision process is discussed and the interaction between change agents and opinion leaders
- Small group activity
- Cross-sectional survey

Future Plans & Advice

- There is a lack of training specifically targeting the impacts farmers experience post-natural weather-related disaster.
- Extension systems should consider implementing or revising pre-existing mental health services to accommodate rural residents, more specifically, farmers.
- Agricultural extension agents work directly with farmers giving them the perfect opportunity to assess their mental health post-disaster and encourage the use of mental health services.
- Extension agents should consider the use of ICTs and RLOs to educate farmers on mental health services and disaster preparedness.

Cost & Resources Needed

- Program developers, instructors or researchers, at minimum require: Articulate or PowerPoint, Qualtrics, access to contact information of agricultural extension agents in order to perform this RLO, and an open-access online repository
- New extension specialist position to develop curricula



TEXAS A&M UNIVERSITY

Agricultural Leadership,
Education & Communications



Jordan College of
Agricultural Sciences
and Technology