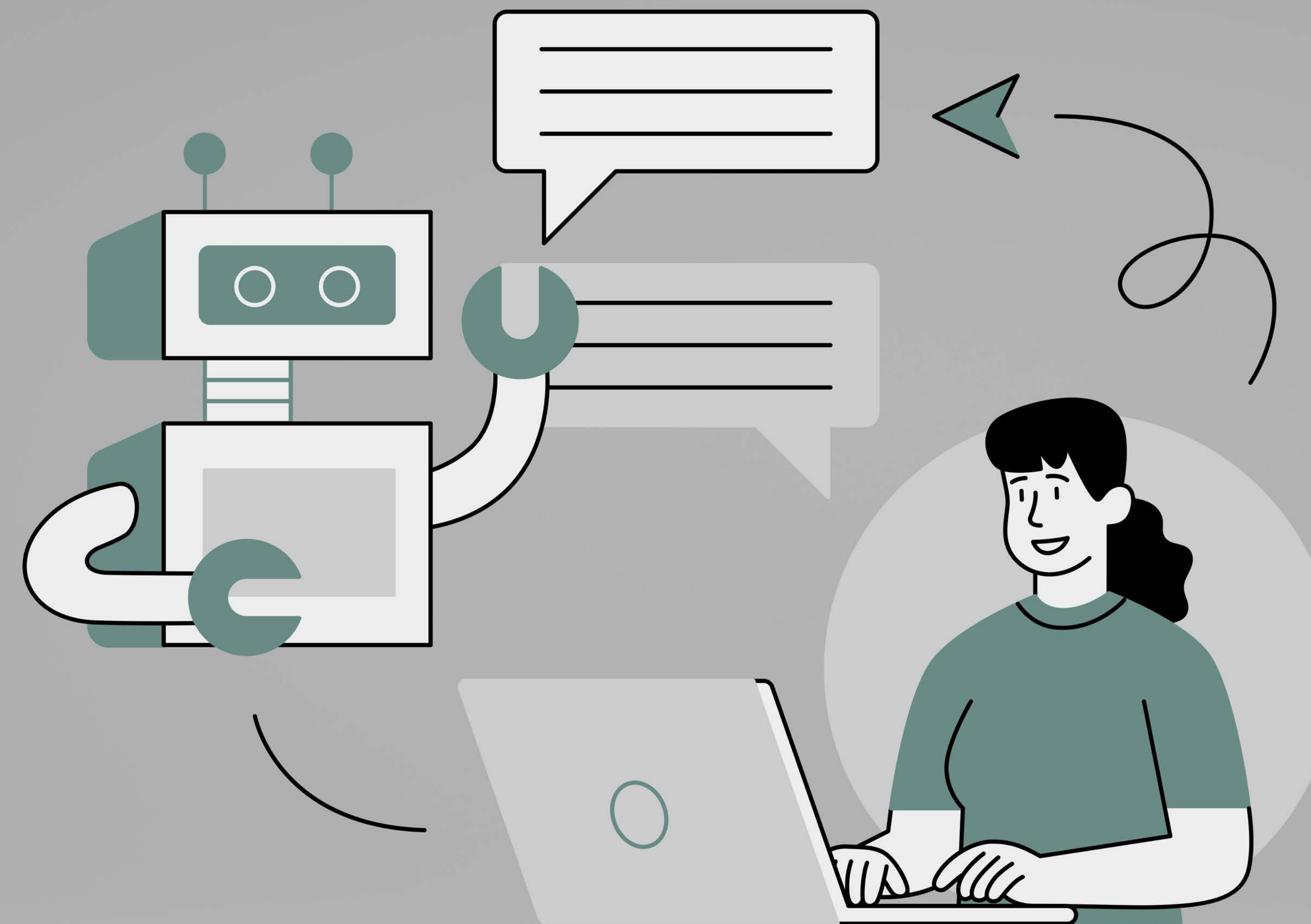


Incorporating Artificial Intelligence (AI) into Coursework: Preparing Students for the Workplace

Why AI?

- Chat-based AI can revolutionize communication in writing and research.
- AI is being integrated into workplace communications.
- Student understanding of the technology is key to ethical and appropriate usage as professionals.



Student Reflections

- **Nearly all** students were surprised at how well the AI performed.
- **Most** perceived AI as a useful tool to save time on otherwise tedious tasks.
- **Many** raised concerns that the AI added details they had not prompted it to include.
- **All** agreed that the responsibility for accurate communication is on the person who uses the AI, not the AI itself.



This software came up with a remarkably impressive and eloquent email. It explained the issue perfectly.
- Student Participant

The Assignment

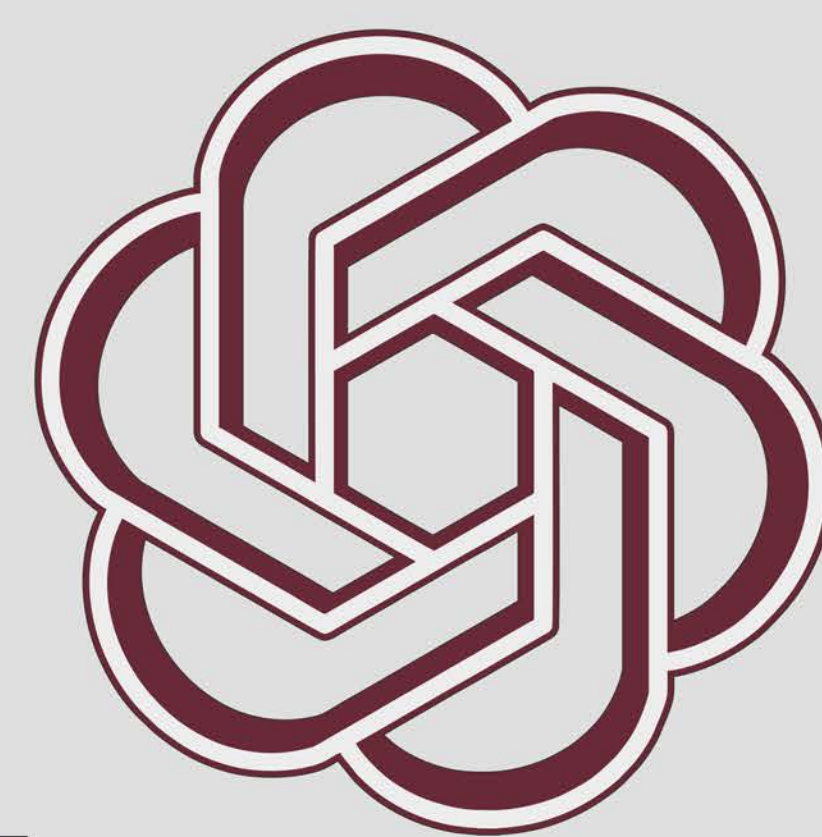
Who	92 students across 3 courses
Technology used	ChatGPT
Prompt	Use ChatGPT to write an email to your "boss" about a hypothetical project issue.
Analysis	Analyze the work for accuracy and professionalism
Reflection	Reflect on the ethics of using AI in education and the workplace.

Results:
Students are split on the ethics of using AI in the workplace, but agree that it is not appropriate for school.

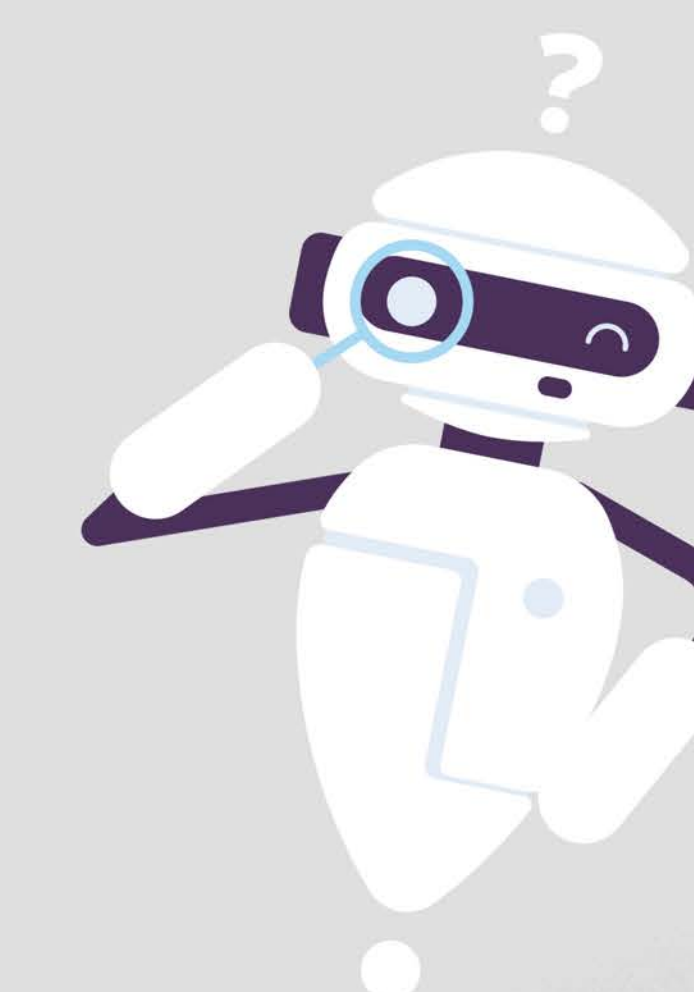


Future Applications

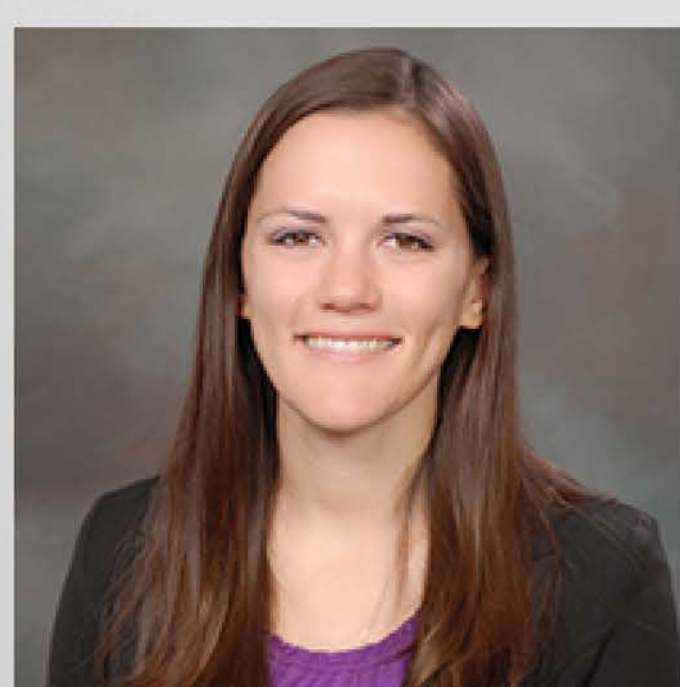
- Students should not be discouraged from learning to use AI.
- Most AI software is free and requires only a device with internet, creating a low barrier to entry.
- Students who are proficient in the use and ethics of AI are better prepared for the workplace.



If used too often, it will limit humans and their ingenuity, and essentially cause a loss of the "human touch" in communications
- Student Participant



Full Abstract



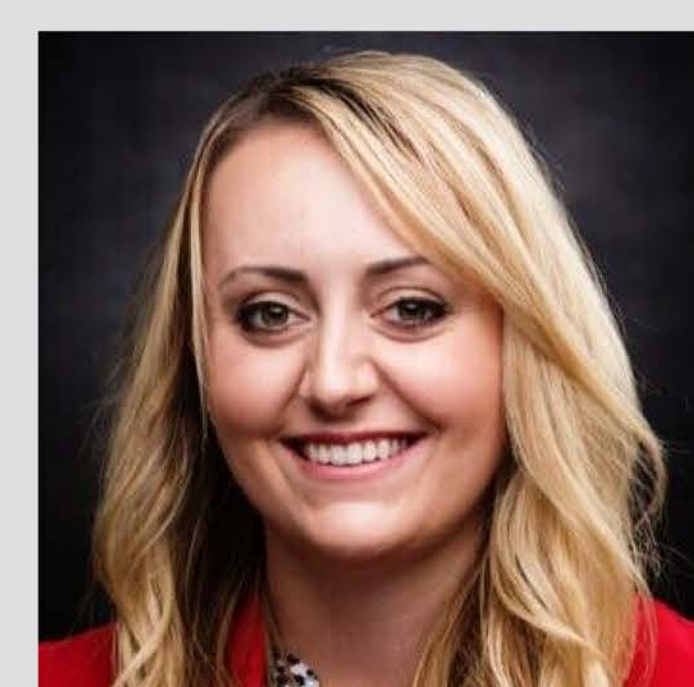
Jessica Scarfuto



Theresa Murphrey



Rilee Hall



Megan Greenwood