

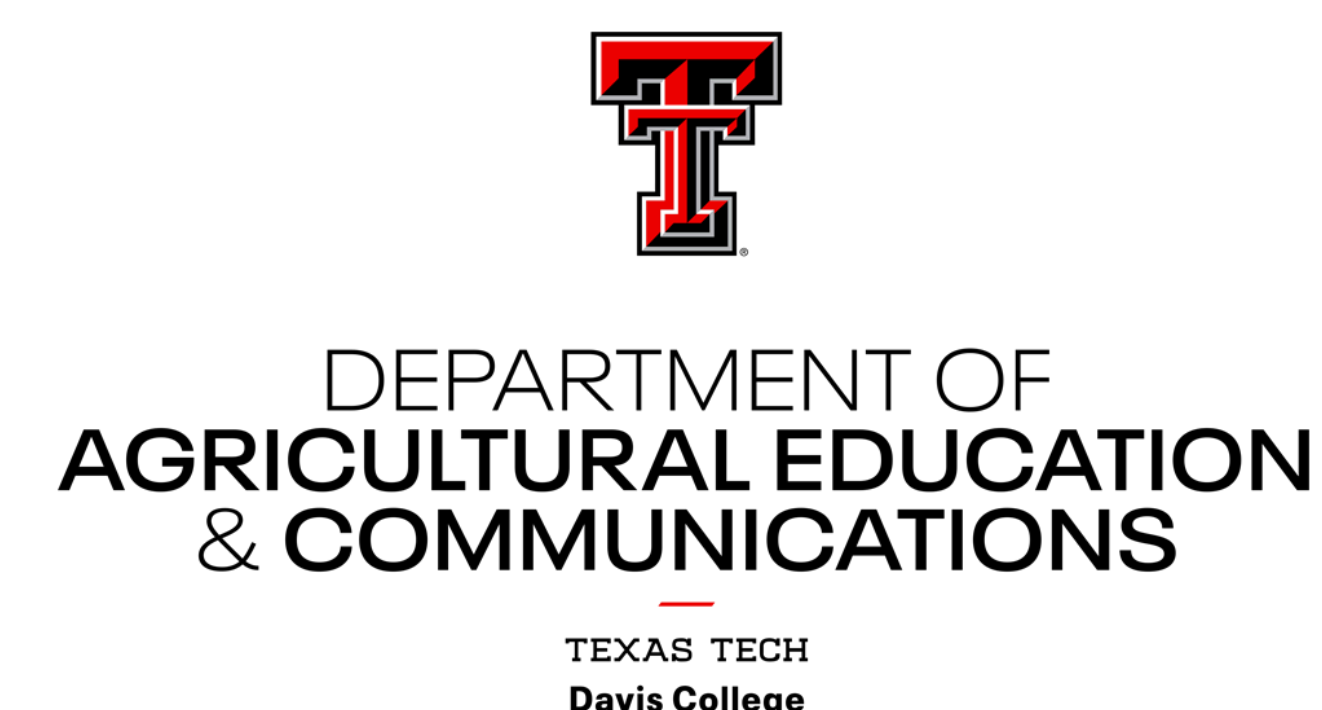
THE LESSON PLAN CHALLENGE



Title:
Student-Designed Lesson Plan Adaptations

Authors:
Krysti Kelley, Chelsea Hatch, Clarissa Darby, Dr. John Rayfield

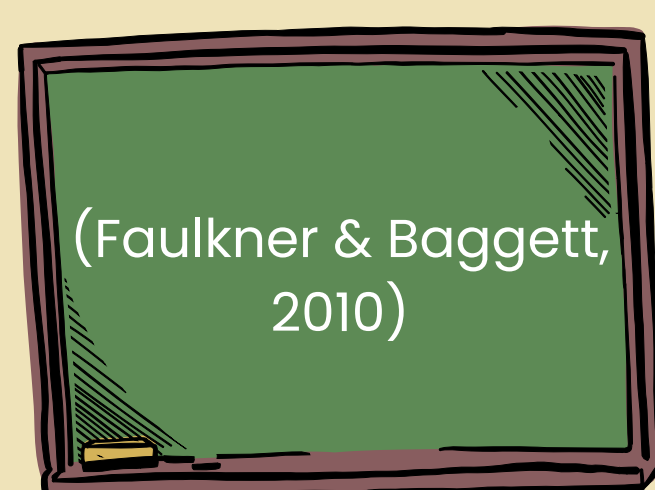
Institution:
Texas Tech University



Introduction:

73%
INCREASE

of individuals **with disabilities**
in secondary CTE courses
(Cai, 2019)



Teachers **need further instruction**
in accomodating and modifying
ag ed coursework



Ag educators perceive a **lack of ability** to accomodate students successfully

THE LESSON PLAN CHALLENGE



Met the need for deeper understanding

Aimed to move concepts from theory to application



How it works: Preparation

Step 1

Provide an overview of content

Meeting the needs of special populations.

Step 2

Create a base lesson plan

Use relevant and familiar content.

Step 3

Develop fictitious student profiles

Each with unique learning needs.

How it works: Execution

Day 1

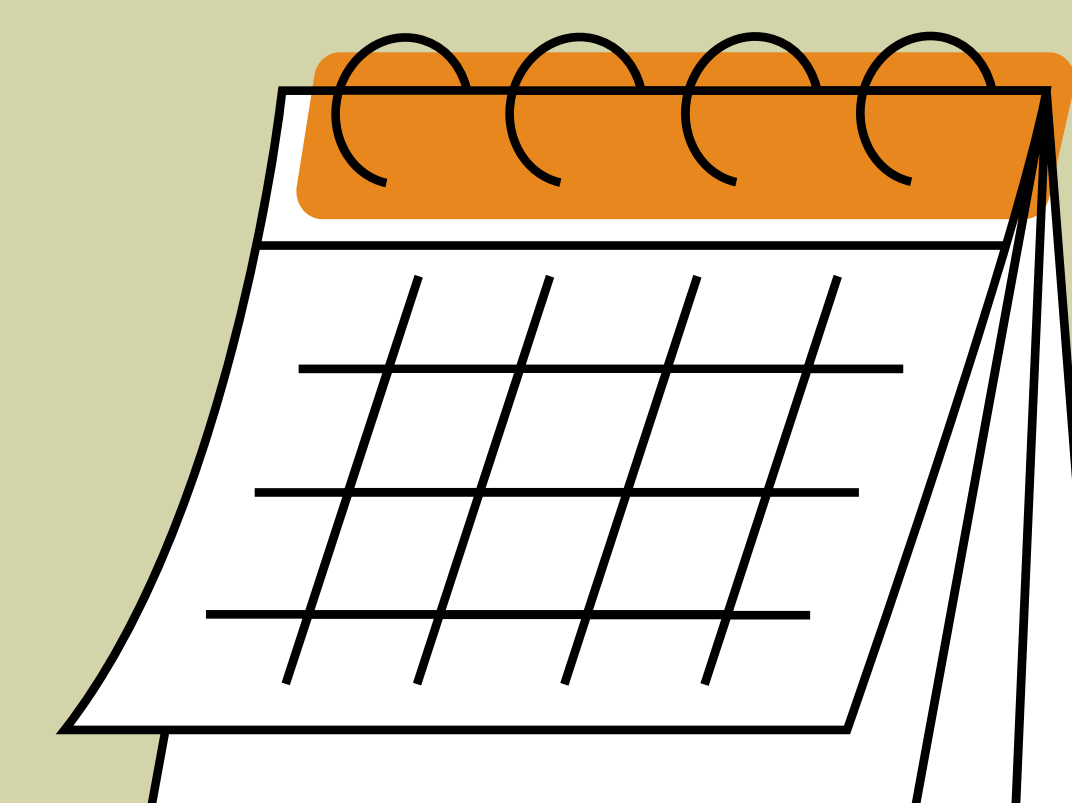
Identify and address the needs

Students should review profiles and create a plan.

Day 2

Presentation of accomodation plan

Student should share ideas and receive peer feedback.



Reflection assignment

Allow for application to a relevant context.

Results to date and implications

50
students

Completed the first iteration of the challenge.

"very beneficial and productive"

-Participant 23

Skills identified

Real-world application of equity and inclusion.

Time management.

Identifying students learning styles and needs.

Problem solving.

Ability to teach special populations.

"how to be flexible to the needs of others"

-Participant 8

95%
of participants

Recommended adding the Lesson Plan Challenge to the course permanently.

"a lot more went into lesson planning"

-Participant 47

Future plans

Continue using the Lesson Plan Challenge for beginning students.



Add a more in-depth and individualized version to a higher level course.

Advice to others

Demonstrate an example student profile

Use smaller group sizes

Provide adequate time



Resources needed



Special populations and adaptions curriculum



Fictitious student profiles



Base lesson plan



Reflection sheets



Scan for full access to abstract and references