

# FROM PERCEPTION TO POLICY: STUDENTS' VIEWS AND COLLABORATIVE DEVELOPMENT OF ETHICAL AI USAGE IN ACADEMIA

KYLER HARDEGREE B.S., KYNZIE HARDEGREE B.S., KYLIE HARLAN M.S., AND LAURA FISCHER PH.D.

## INTRODUCTION

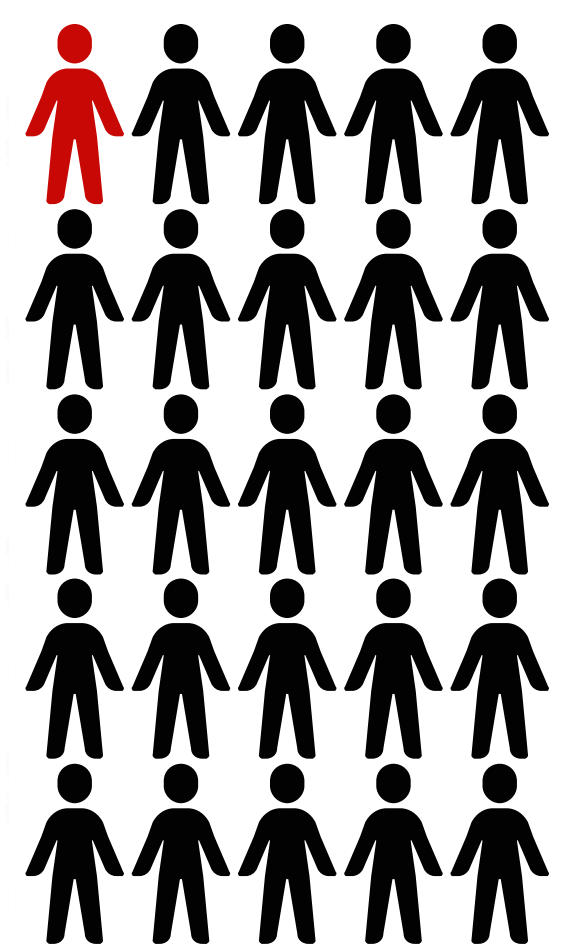
- Advancements in AI have revolutionized education, and today's learners have an array of resources and strategies at their disposal (Davies & West, 2013).
- Involving students in shaping their education allows for more suitable, acceptable, and effective learning (Geurts et al., 2023).
- AI tools are being adopted by industry, and students should gain experience using them (Peres et al., 2023).

## HOW IT WORKS

- Students answered four questions about their perceptions of ethical AI usage via a discussion board.
- After posting, students were asked to identify three classmates' posts they found insightful.
- Students were then assigned reflection activity to encourage them to reflect further on ethical AI usage, and asked them to propose an AI policy for the course.
- Using students' responses the instructor and teaching assistants created an AI policy.

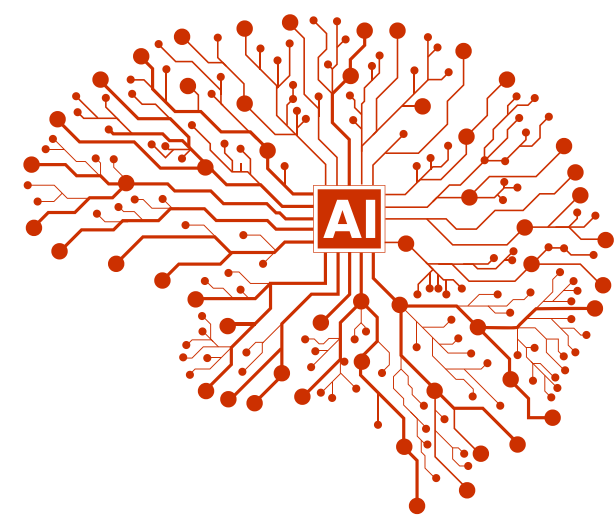
## RESULTS

The reflections provided insight into what students consider ethical issues or uses of AI and what they deem important to include in the course's AI usage policy.



**One in 25**

Students enrolled in the course **had not used AI software before.**



### KEY TAKEAWAYS FROM POLICY

#### BRAINSTORMING TOOL

"Students should use AI as a helper, not a replacement for their own work. This ensures that students learn the content and that AI does not take away from student learning."



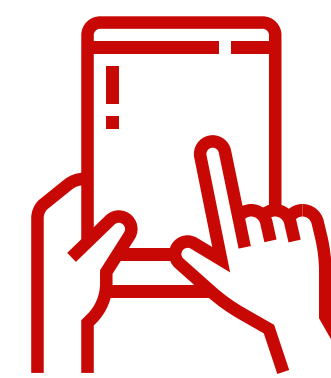
#### IDEA GENERATION

"Students may use AI tools to assist them with tasks such as gathering information, brainstorming ideas, and checking grammar, spelling, and punctuation."



#### USE SPARINGLY

"Students should avoid sharing personal, sensitive, or confidential information with AI tools because the privacy of the data is unknown."



#### CITE AI

"AI tools must be properly documented and cited appropriately for academic integrity."



#### LIMIT PERCENTAGE OF USE

"A student will be given a 20% acceptance of AI in each assignment. If 20% is surpassed, the assigned grade will result in a zero."



## ADVICE TO OTHERS

- Educators should create clear AI policies in their courses.
- As AI evolves, students need to recognize the benefits and risks of AI tools in the classroom (Chan, 2023).
- Involving students in the policy creation process helps foster a culture of responsible AI usage
- This approach puts it in the hands of students and ensures policies are relevant and practical (Peres et al., 2023).

## RESOURCES NEEDED

- This activity is free and requires no additional resources other than time.
- Students should be equipped with the materials needed to participate in this activity.
- Instructors should allow adequate time to complete the initial discussion and follow-up AI reflection.

CHECK OUT  
OUR AI POLICY



SCAN FOR  
ABSTRACT &  
REFERENCES



DEPARTMENT OF  
AGRICULTURAL EDUCATION  
& COMMUNICATIONS

TEXAS TECH  
Davis College