

IMPLEMENTING ELEMENTARY AGRICULTURE EDUCATION (EAE) IN GEORGIA

R. Luci Searels, PhD Student

Graduate Research Assistant, University of Florida

T. Grady Roberts, PhD

Professor and Distinguished Teaching Scholar, University of Florida

J. Peake, PhD

Professor, University of Georgia

E. Rubenstien, PhD

Associate Professor, University of Georgia

INTRODUCTION:

- Global food security depends on a workforce and citizenry that understand agri-food systems.
- With fewer Americans connected to production agriculture and accountability pressures reducing time for applied science, elementary agricultural education (EAE) offers a compelling STEM-aligned context for real-world learning.
- Georgia's EAE initiative (legislated in 2018; pilots beginning 2019) highlights a scalable path for early agricultural literacy.

PURPOSE:

Describe a district approach to adopting and scaling K-5 EAE using Kotter's (2012) 8-Step Change Model.

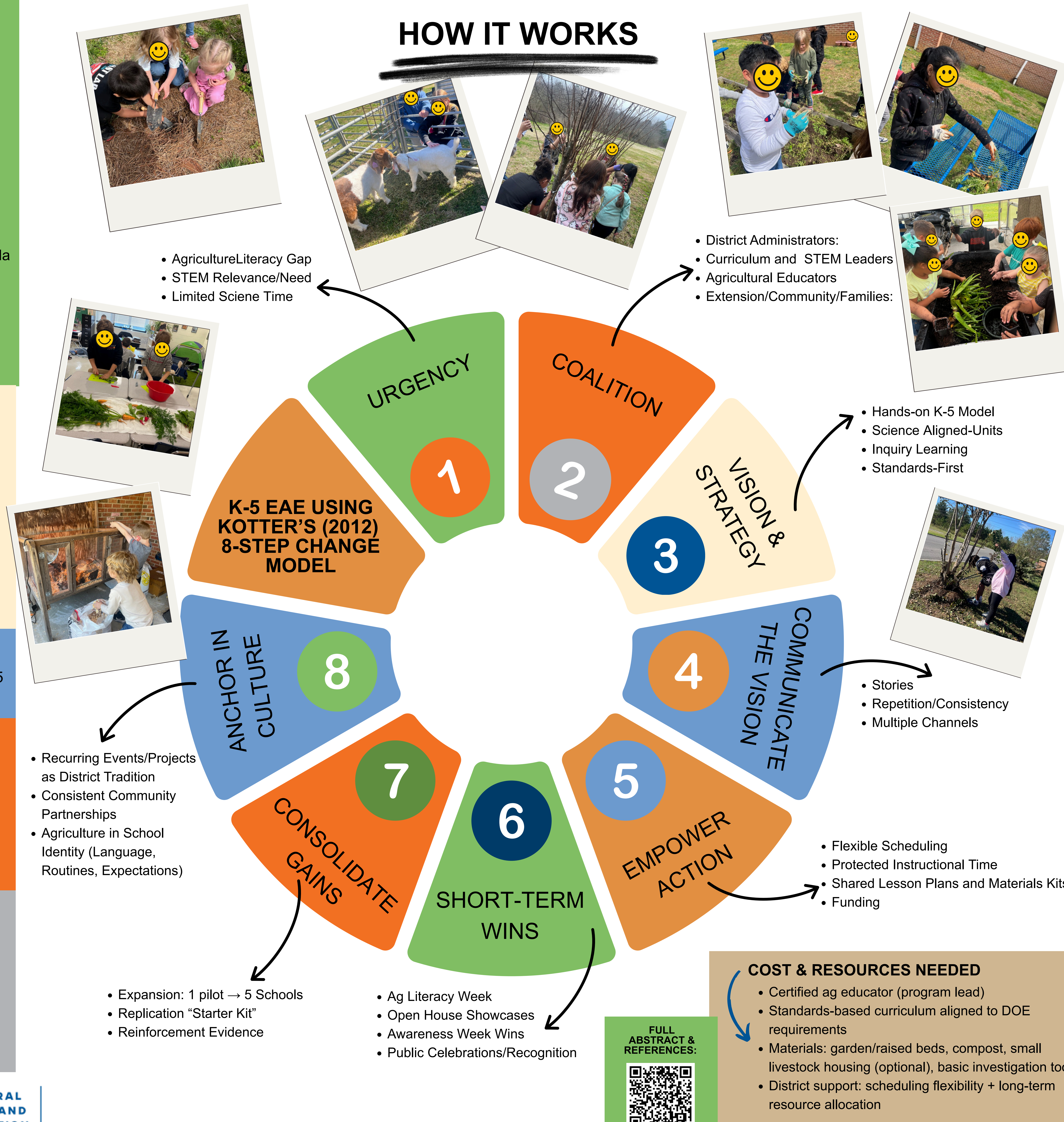
RESULTS TO DATE:

- By 2025, five schools in Walker County adopted full K-5 EAE, with a planned scale to 11 schools within five years.
- Teachers report stronger science instruction through ag integration; students show increased enthusiasm for hands-on learning.

FUTURE PLANS:

- Build measurement capacity (rubrics, observations, evaluations).
- Expand PD for teachers without ag backgrounds.
- Sustain momentum through data + storytelling (student showcases, local media, community partners).

HOW IT WORKS



FULL ABSTRACT & REFERENCES:



COST & RESOURCES NEEDED

- Certified ag educator (program lead)
- Standards-based curriculum aligned to DOE requirements
- Materials: garden/raised beds, compost, small livestock housing (optional), basic investigation tools
- District support: scheduling flexibility + long-term resource allocation